



# Owl Trek Breaking News

NEWS FROM TRAVEL / FINANCE & ACCOUNTING

January 29, 2015

To: KSU Travelers

From: *Rochelle Gross*, Travel Manager

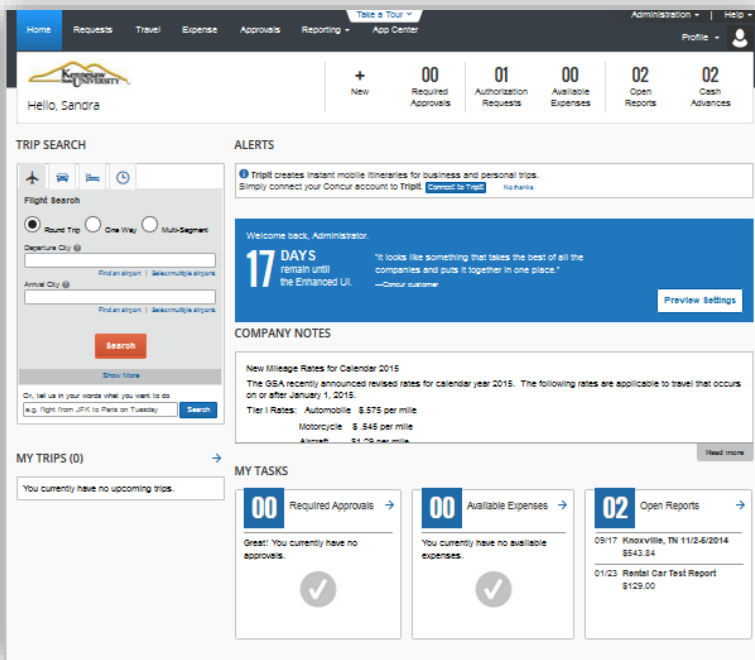
Office of Finance & Accounting - [travel@kennesaw.edu](mailto:travel@kennesaw.edu)

PEEK! TRY IT! PREVIEW!  
PEEK! TRY IT! PREVIEW!  
PEEK! TRY IT! PREVIEW!  
PEEK! TRY IT! PREVIEW!  
PEEK! TRY IT! PREVIEW!



**DONE! CONCUR NEW USER  
INTERFACE ROLLS OUT 1/31/2015**

**Concur Enhanced User Experience – WILL BE FINALIZED 1/31/2015**



The KSU Travel Office wanted you to have the opportunity to get acquainted with the changes in the platform prior to the campus-wide rollout on 1/31/2015.

For an overview presentation of the enhanced user experience, click the picture at the right or select the link below.

<http://www.concurtraining.com/resources/transition.htm>

With the updated user experience, you should expect an easier, more intuitive interface, as well as the ability to accomplish more in less time. The solution also features a new "Work to Zero" task list, which provides an easy view and access to the items requiring your attention. This means fewer steps to complete the tasks and the satisfaction of getting it done!

For more information, contact [travel@kennesaw.edu](mailto:travel@kennesaw.edu) or call the Travel Hotline at 478-570-4394.